

Charleston County, South Carolina

Organizational Chart County Departments

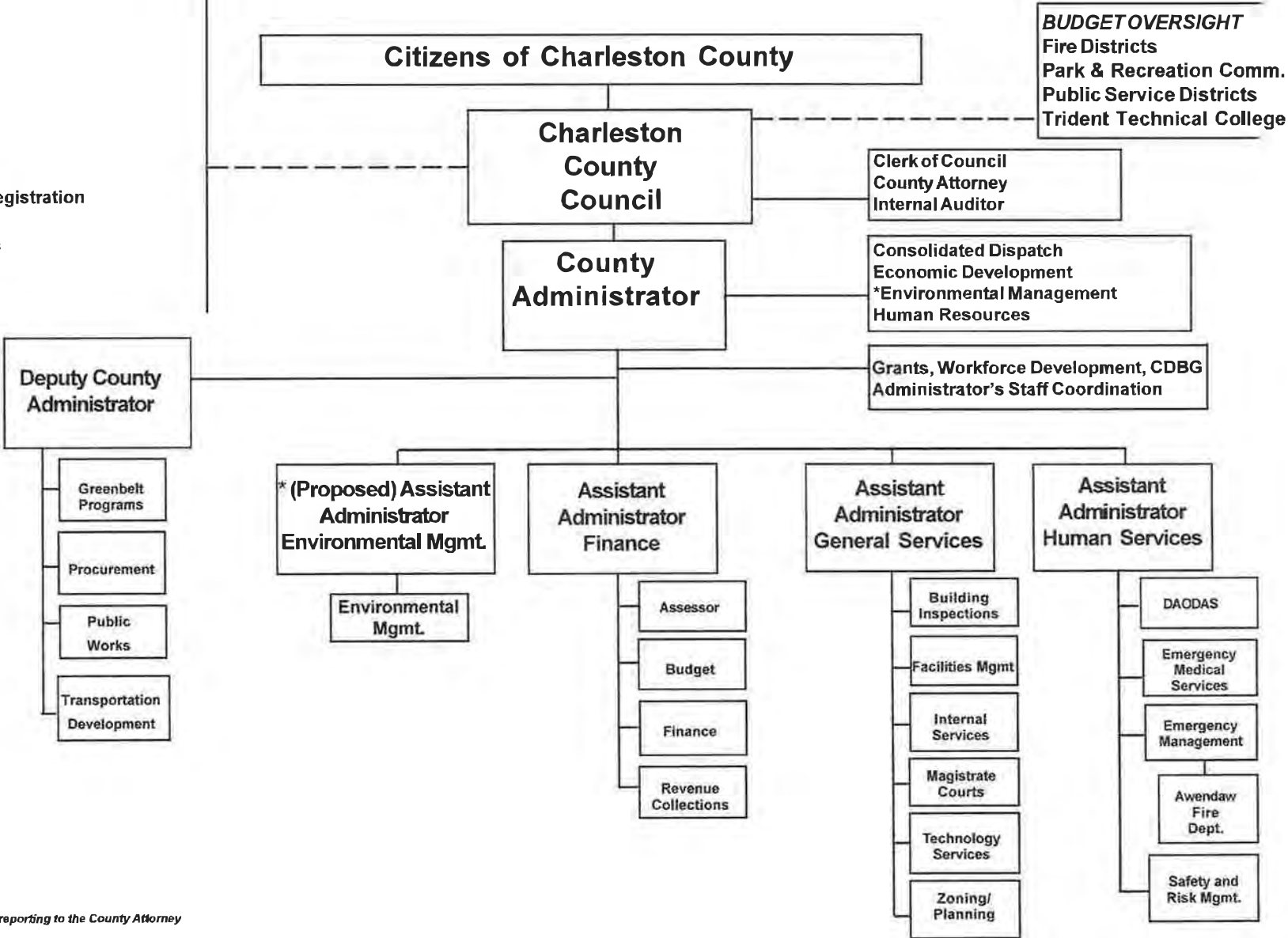
Effective 6/03/2010

ELECTED

- Auditor
- Clerk of Court
- Coroner
- Probate Court
- RMC
- Sheriff
- Solicitor
- Treasurer

APPOINTED

- Elections/Voter Registration
- Library Board
- Magistrate Courts
- Master-in-Equity
- Public Defender
- Veterans Affairs



* currently reporting to the County Attorney